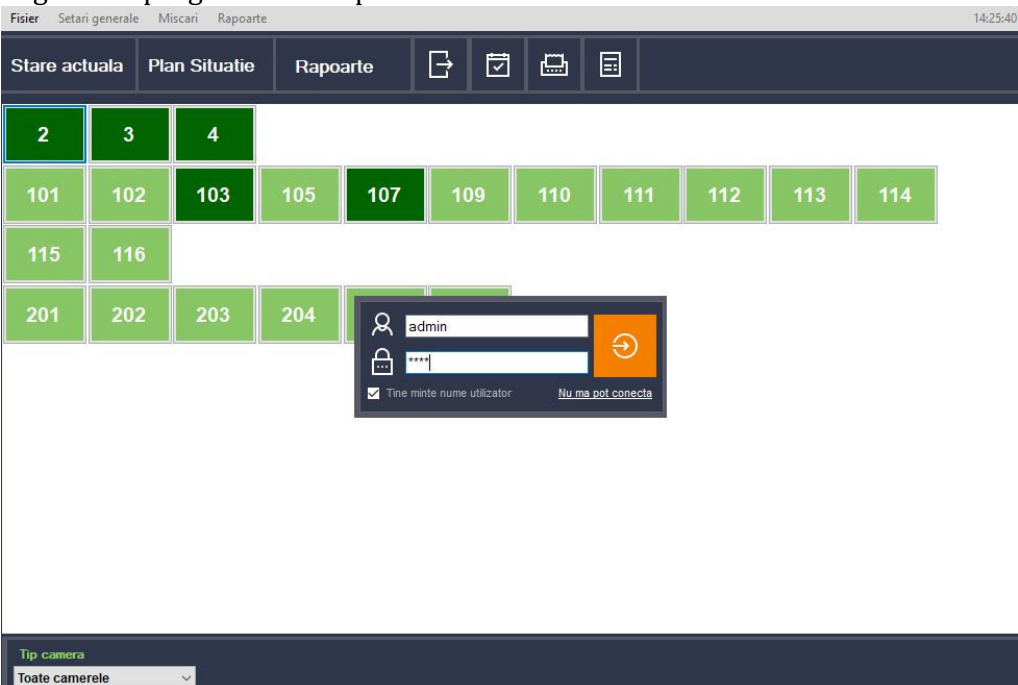


Logarea in program se face pe baza de USER si PAROLA



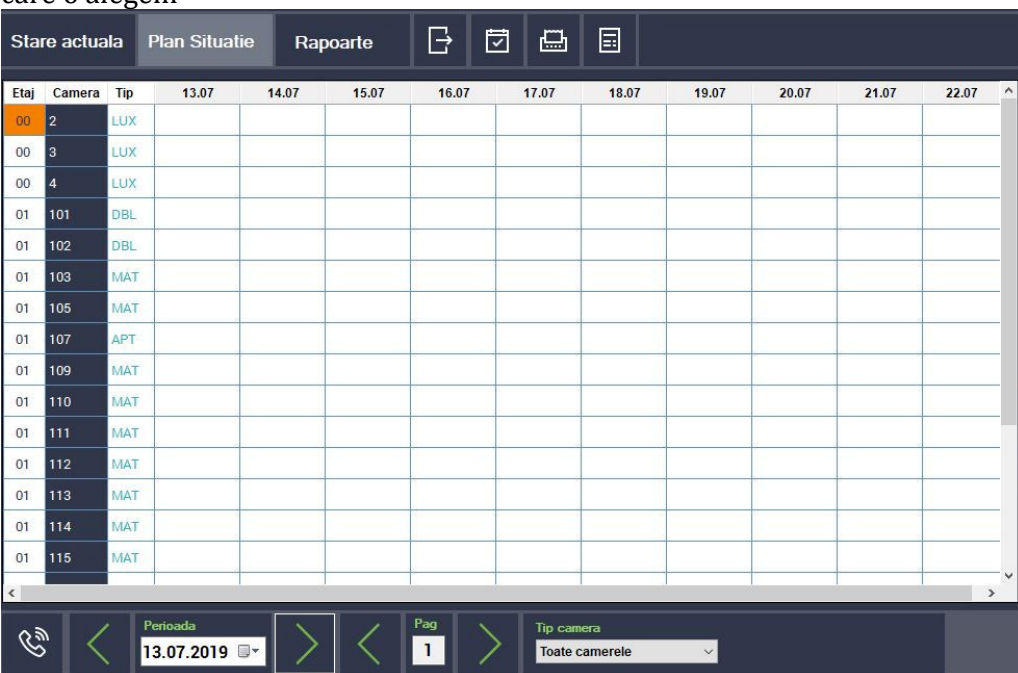
The screenshot shows the main interface with a navigation bar at the top containing 'Fisier', 'Setari generale', 'Miscari', and 'Rapoarte'. Below this is a menu with 'Stare actuala', 'Plan Situatie', and 'Rapoarte'. A grid of room numbers is displayed, with room 103 highlighted in dark green. A login dialog box is open, showing fields for 'admin' and a password, a 'Tine minte nume utilizator' checkbox, and a 'Nu ma pot conecta' link. At the bottom, there is a 'Tip camera' dropdown menu set to 'Toate camerele'.

La Fisier Setari generale se incep setarile.

Se seteaza tipul de camera, apoi se trece la numerotare camera si tipul camerei.

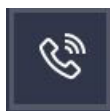
Pe butonul Rapoarte gasim diferite situatii si rapoarte.


Pe Stare actuala se vede situatia camerelor: libere, ocupate, murdare sau defecte in perioada selectata. Pe Plan de situatie vedem detaliat ce avem conform perioadei pe care o alegem

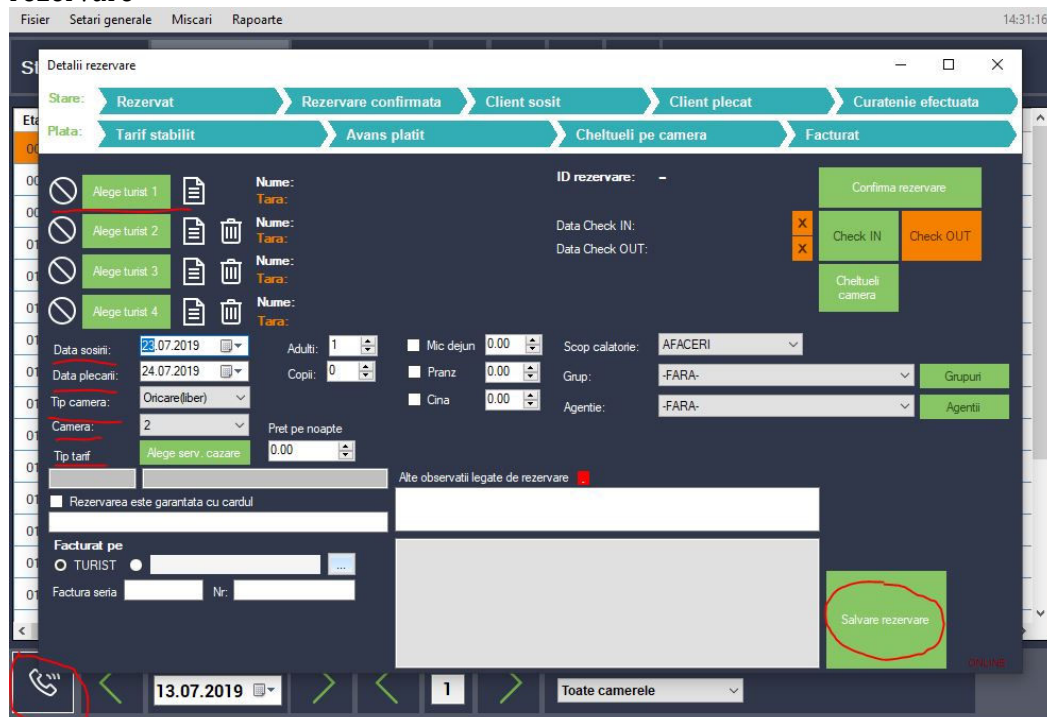


The screenshot shows the 'Stare actuala' view with a detailed table of room status. The table has columns for 'Etaj', 'Camera', 'Tip', and dates from 13.07 to 22.07. The first row is highlighted in orange. Below the table is a navigation bar with 'Perioada' set to 13.07.2019, 'Pag' set to 1, and 'Tip camera' set to 'Toate camerele'.

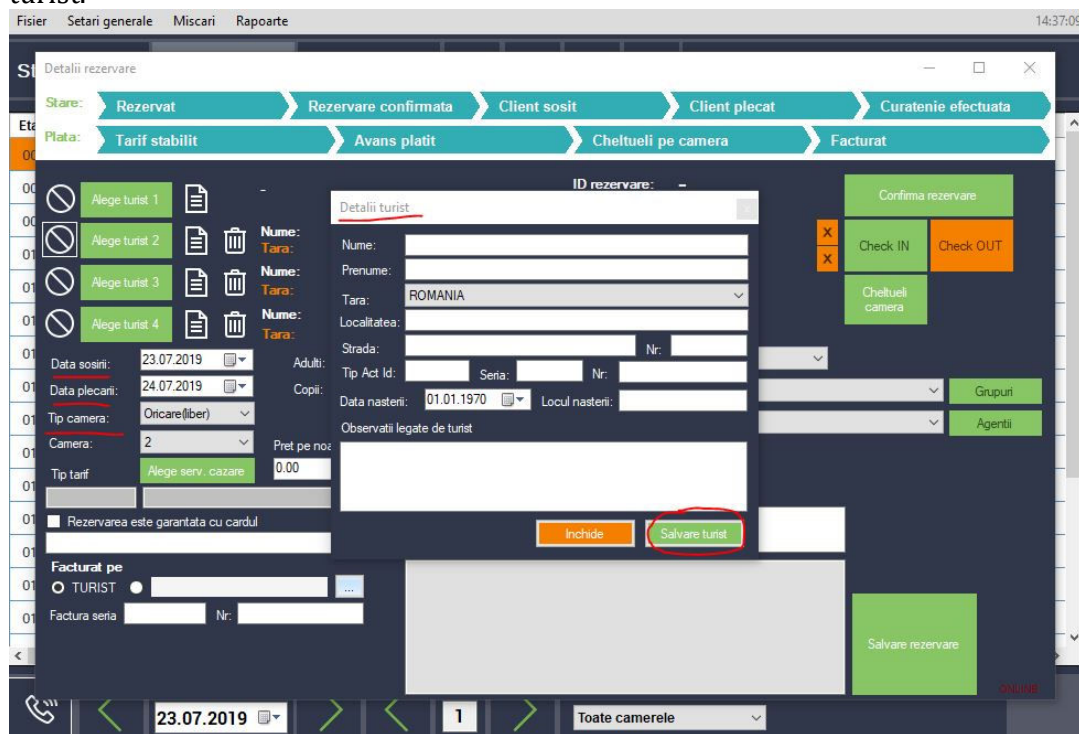
Etaj	Camera	Tip	13.07	14.07	15.07	16.07	17.07	18.07	19.07	20.07	21.07	22.07
00	2	LUX										
00	3	LUX										
00	4	LUX										
01	101	DBL										
01	102	DBL										
01	103	MAT										
01	105	MAT										
01	107	APT										
01	109	MAT										
01	110	MAT										
01	111	MAT										
01	112	MAT										
01	113	MAT										
01	114	MAT										
01	115	MAT										



Pentru a crea un TURIST/CLIENT apasam butonul  apoi se deschide detalii rezervare



Se creaza TURISTUL/CLIENTUL, unde se trec datele lui cat mai complete si dam salvare turist.





Se alege perioada pe care se face rezervarea, tipul de camera, tip tarif, servicii alese de turist, apoi se da Salvare rezervare

In momentul sosirii clientului in locatie sau mai repede (depinde de politica interna) se da Confirmare rezervare.

Fisier Setari generale Miscari Rapoarte 16:56:04

Stare actuala Plan Situatie Rapoarte

Etaj	Camera	Tip	23.07	24.07	25.07	26.07	27.07	28.07	29.07	30.07	31.07	01.08
00	2	LUX	ACS UT... 23.07 - 24.									
00	3	LUX	CODR... 23.07 - 24.									
00	4	LUX										
01	101	DBL	ROBI F... 23.07 - 24.									
01	102	DBL										
01	103	MAT		AGRI P... 24.07 - 25.	AUTO... 25.07 - 26.							
01	105	MAT										
01	107	APT	ANA MARIA 23.07 - 26.07						ALBAC... 29.07 - 30.			
01	109	MAT										
01	110	MAT	AR - FL... 23.07 - 24.									
01	111	MAT										
01	112	MAT										
01	113	MAT										
01	114	MAT										
01	115	MAT										
			ADIRUSAN bar									

Perioada: 23.07.2019 Pag: 1 Tip camera: Toate camerele

Putem vedea pe planul de situatie cum stam cu rezervarile in perioada aleasa.